

Cash Register Polling Software and Interface Modules to Help You Take Control of Your Business



PC > Poll
tri-technical systems



Make the Connection

Free Online Demo

PC>Poll PC>Poll is polling and programming software that helps businesses of all sizes, from mom-and-pop shops to franchises with hundreds of locations, collect and utilize information from electronic cash registers (ECRs).

PC>Poll polling software does more than just basic data collection. It also helps business owners transform their data into a meaningful informational tool that can be used to help them grow and succeed. Register program data can be brought back to the PC and PC>Poll can be used to make additions and changes quickly and easily. Those changes can then be sent automatically to one or more stores. Report data can be collected, viewed, printed and even exported to other software modules to allow complete control of sales information. PC>Poll can connect to cash registers in the same location as the PC or remote connections can be used to connect one PC to registers around the world.

PC>Poll works with Casio, SAM4s, Sharp and Toshiba TEC America cash registers.



The PC>Poll polling software connects to the register to collect data. Once back at the PC there are limitless ways to utilize the data to better manage your business. Below is a brief listing of the various interface options offered by Tri-Tech.

Interfaces

Archive Agent – Archive, delete, restore and transfer previously created polling data files. Archive Agent is a file management tool.

QB Interface – Transfer program and report data to QuickBooks™ to create an interface between register data and the accounting abilities of QuickBooks.

XLS Export Wizard – Transfer collected polling report data to a spreadsheet software application. Design custom spreadsheets and have the software automatically or manually populate the file with previously collected report values.

PC/Capture – Connect to your register to collect real-time journal data. Watch sales data as it is transmitted to help catch operational errors and theft.

* AIMsi, Active-e, and PC>Poll are the intellectual property of Tri-Technical Systems. All other product and company names may be trademarks or registered trademarks of their respective companies.

Manual programming changes at a cash register can be time consuming and difficult. It also ties up the registers from processing sales. PC>Poll V7 streamlines this process; make edits to the software at any time during the business day

PC>Poll V7 Polling

and distribute edits whenever it is convenient, or automatically schedule events to run at the end of the day. In addition to file editing, PC>Poll V7 can be used to collect critical report data from the cash registers. Reports can be polled on demand to spot check information or automatically after business hours. Having the data at the PC gives you complete control to check sales numbers, look for operational errors and to view historical information.

Polling Features

Checkbox style communication selections allows you to quickly multi-select programs to save, to send or reports to poll on demand.

Easy to access menus, most recent recall lists and icon buttons to help you intuitively use the software.

Create scripts, schedules and set up the calendar for automatic polling options.

Security and login options to help safeguard data.

Use on a standalone PC or on a network.

Poll registers locally or remotely, all from one PC. The software supports direct, TCP/IP and FTP connections.

User preferences let you run PC>Poll V7 the way that best fits your business with custom exporting options, screen display and functionality selections, and user-defined classes for quick sorting and searching options.

PC>Poll V7 displays the register's program data in both grid and detail formats for easy editing. Checkboxes and pop-up menus make it easy to edit existing items and create new ones.

Mass Update allows you to update and edit many items simultaneously.

Mass Create can rapidly generate hundreds of new items through the use of PLU templates.

PLU Sale options offer the flexibility to design your own product sales. Select the items and sale time periods. Change prices manually or increment/decrement by a set amount or percentage.

Barcode printing to standard label sheets/barcode printers.

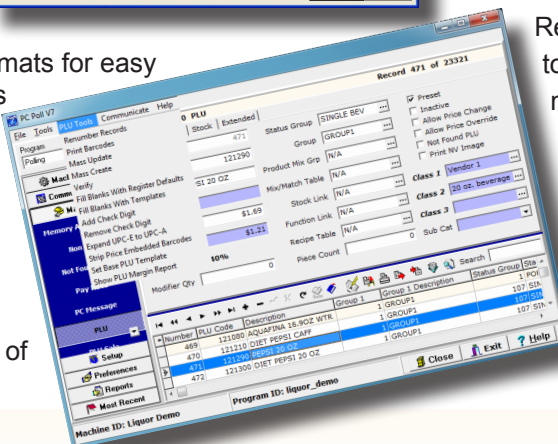
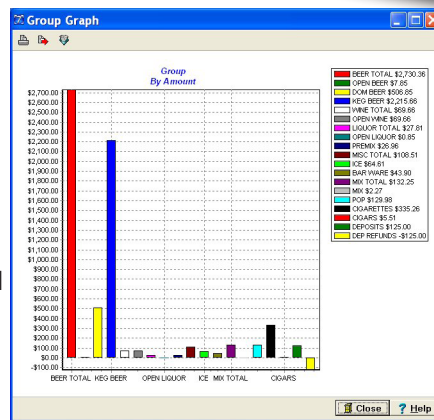
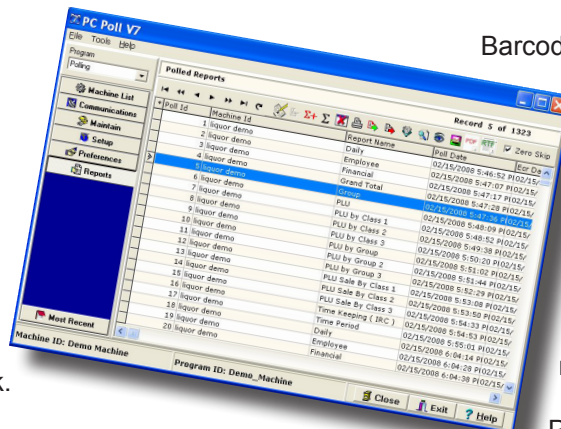
Share data between machines to save time editing identical items.

Set up classes (user groups) for quick filtering, searching, sorting, updating and even reporting.

Program report data to automatically export or email in a variety of formats.

PC>Poll V7 stores report data until you choose to delete it. You can quickly view, print and export previously collected report data. PC>Poll V7 also includes a graphing function. These can be viewed, printed and saved as a .bmp file to allow you to insert the charts into a document or email.

Report consolidation allows you to generate your own week-end, month-end and year-end reports. View, print, and export report totals to a .txt, .pdf, .csv or .xls file for later viewing.



SUPPORTED CASH REGISTERS

SAM4S

- SPS-500
- SPS-300 Series
- ER-900 Series
- SPS-2000
- SPS-1000
- ER-390M
- ER-285M
- SER-7000/7040
- ER-52xxM Series
- ER-650 and ER-650R
- ER-655II
- Coming Soon: Sam4POS



SHARP

- UP-810F, UP-820N and UP-820F
- UP-3500
- UP-600 and UP-700
- ER-A520 and ER-A530
- ER-A420 and ER-A410

TOSHIBA

Leading Innovation >>>

- TEC 1595
- TEC FS1650
- TEC MA1650



CASIO®

- TE-8500F and TE-7000S
- TE-3000S and TE-4500F
- QT-6000, QT-6100 and QT-6600
- TE-2200 and TE-2400

Additional Modules

ARCHIVE AGENT

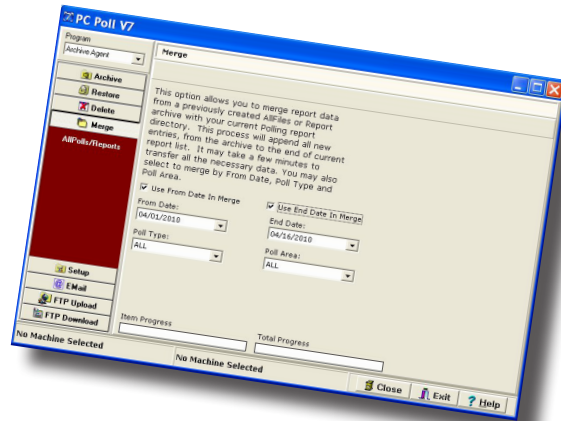
Archive Agent archives PC>Poll polling, custom selected files, and QuickBooks Interface V3 data for all V7 registers. It is a complete backup for all PC>Poll V7 products.

Allows you to archive, restore and delete files from your polling directories.

Data is compressed and stored in Zip files. Archive Agent can be used to back up software data and to recover lost data.

Corporate polling features include emailing/FTP options and data file merge.

Archive Agent can be programmed to run automatically via the PC>Poll V7 Calendar.



QUICKBOOKS INTERFACE

Transfers data into QuickBooks from all supported registers in PC>Poll V7 with a few simple clicks.

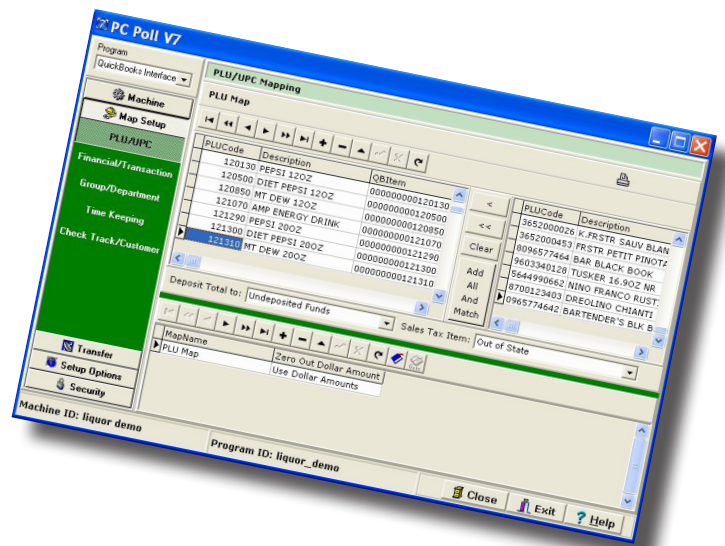
Auto transfer routine for most configurations.

All files are transferred in and out of QuickBooks in IIF format.

Interfaces with QuickBooks 5, 6, 99, 2000—2018 and Standard, Pro and Premier versions.

Use any or all of the following reports from PC>Poll V7 to transfer data into QuickBooks:

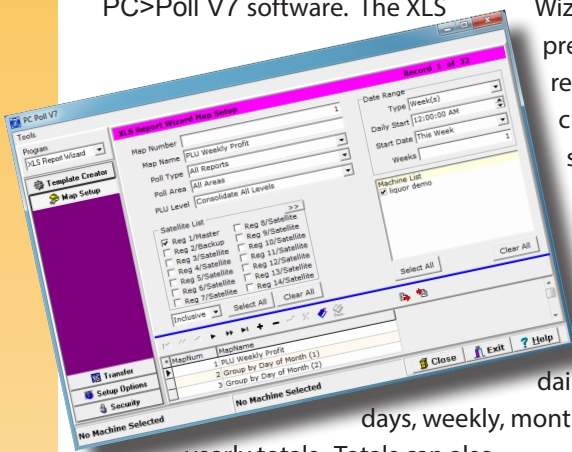
- PLU/UPC/Scan PLU
- Time Keeping
- Open Check/Customer/Check Track
- Department/Group
- Transaction/Financial



XLS Wizard

Collecting data from your electronic cash registers is just the beginning. Being able to sort, view and create custom reports that display the data that is important to YOUR business is needed to excel in today's marketplace. The XLS Wizard allows you to do just that ~ customize previously collected report data to create a single report containing only the data that is important to your business. Combine data from multiple reports onto one spreadsheet for fast and easy access. The XLS Wizard allows you to cut through all the excess information and display what you want to see ~ on demand!

Tri-Tech's XLS Wizard software is an add-on module to the PC>Poll V7 software. The XLS

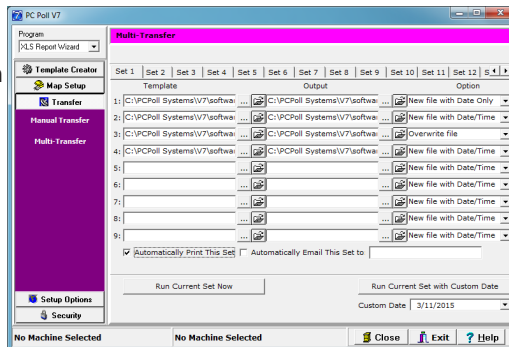


Wizard accesses previously collected report data to create customized spreadsheet-style reports. Data can be summed over date ranges and broken down by daily shifts, entire days, weekly, monthly and even

customized for desired effect and readability. You can create multiple templates with Template Creator and then copy and paste the automatically generated layouts from multiple spreadsheet files into one spreadsheet to design an end-of-day report as unique as your own business.

	Amount	This Week	Last Week	Total	Quantity	This Week	Last Week	Total	Dollar Difference
1 Demo Store Sales									
2									
3 -PLU LVL1 TTL	\$1,600.02	\$962.23	\$2,642.25						
4 -PLU LVL2 TTL	\$26.00	\$75.00	\$101.00						
5 -PLU LVL3 TTL	\$22.00	\$20.00	\$42.00						
6 ADJUST TTL	\$36.00	\$20.00	\$56.00						
44 NON-TAX	\$1,764.02	\$1,092.23	\$2,856.25						
45 TAX1 SALES	\$1.50	\$5.66	\$7.16						
46 TAX2 SALES	\$967.32	\$80.64	\$1,047.96						
51 TAX1	\$774.80	\$5.24	\$779.04						
52 TAX2	\$68.90	\$5.24	\$74.14						
57 XMPY TAX1 SALES	\$69.75	\$5.24	\$74.99						
64 TAKE OUT SALES	\$20.40	\$27.90	\$48.30						
69 % 4	\$15.02	\$26.33	\$41.35						
76 NET SALES	(\$1.84)	\$0.00	(\$1.84)						
77 CREDIT TAX1	\$186.93	\$0.00	\$186.93						
84 MOSE RETURN	(\$0.68)	\$0.00	(\$0.68)						
86 PREVIOUS VOID	(\$10.20)	\$0.00	(\$10.20)						
89 CANCEL	(\$29.95)	\$0.00	(\$29.95)						
103 GROSS SALES	\$32.90	(\$1.90)	\$30.00						
105 AUDACION	\$1,892.55	\$0.00	\$1,892.55						
106 CASH-IN-DRAWER	(\$5.44)	\$423.70	\$418.26						
130 CHECK-IN-DRAWER	\$1,486.37	\$0.00	\$1,486.37						
135 DRAWER1 TOTAL	\$36.62	\$423.70	\$460.32						
143 WASTE	\$1,522.99	\$0.00	\$1,522.99						

yearly totals. Totals can also consist of grand totals from multiple machines/store locations or be broken down on a per machine basis. The XLS Wizard supports sending data to one spreadsheet file, multiple tabs within one spreadsheet file or it can be configured to populate multiple spreadsheet files automatically.



Available Reports

- PLU (item sales)
- Financial/Transaction
- Hourly
- Group/Department
- Open Check

There are three methods available to allow for easy transferring of data from PC>Poll V7 to the customized

spreadsheet files.

1. Conduct a manual transfer on demand.
2. Use a multi-transfer routine that can accommodate up to 450 different templates and output files.
3. Configure the multi-transfer routine to run autonomously via the PC>Poll V7 Calendar.

So, from start to finish, Tri-Tech's XLS Wizard is a quick & easy way to customize YOUR data!

spreadsheet files.

1. Conduct a manual transfer on demand.
2. Use a multi-transfer routine that can accommodate up to 450 different templates and output files.
3. Configure the multi-transfer routine to run autonomously via the PC>Poll V7 Calendar.

So, from start to finish, Tri-Tech's XLS Wizard is a quick & easy way to customize YOUR data!

PC/Capture V2

Being able to access your data quickly and with ease is the foundation of Tri-Tech's PC/Capture software. PC/Capture allows owners to remotely monitor detailed transactions from the cash register or point of sale system in real time. This software can be used to catch operational errors and as part of a security plan to deter employee theft. PC/Capture retains a complete history of all point of sale transactions for real-time monitoring or for later review. PC/Capture can be used as a direct connect printer or as a TCP/IP printer depending on the supported register functionality.

PC/Capture emulates the functionality of a journal or report register printer at the PC. Connect the PC and collect!

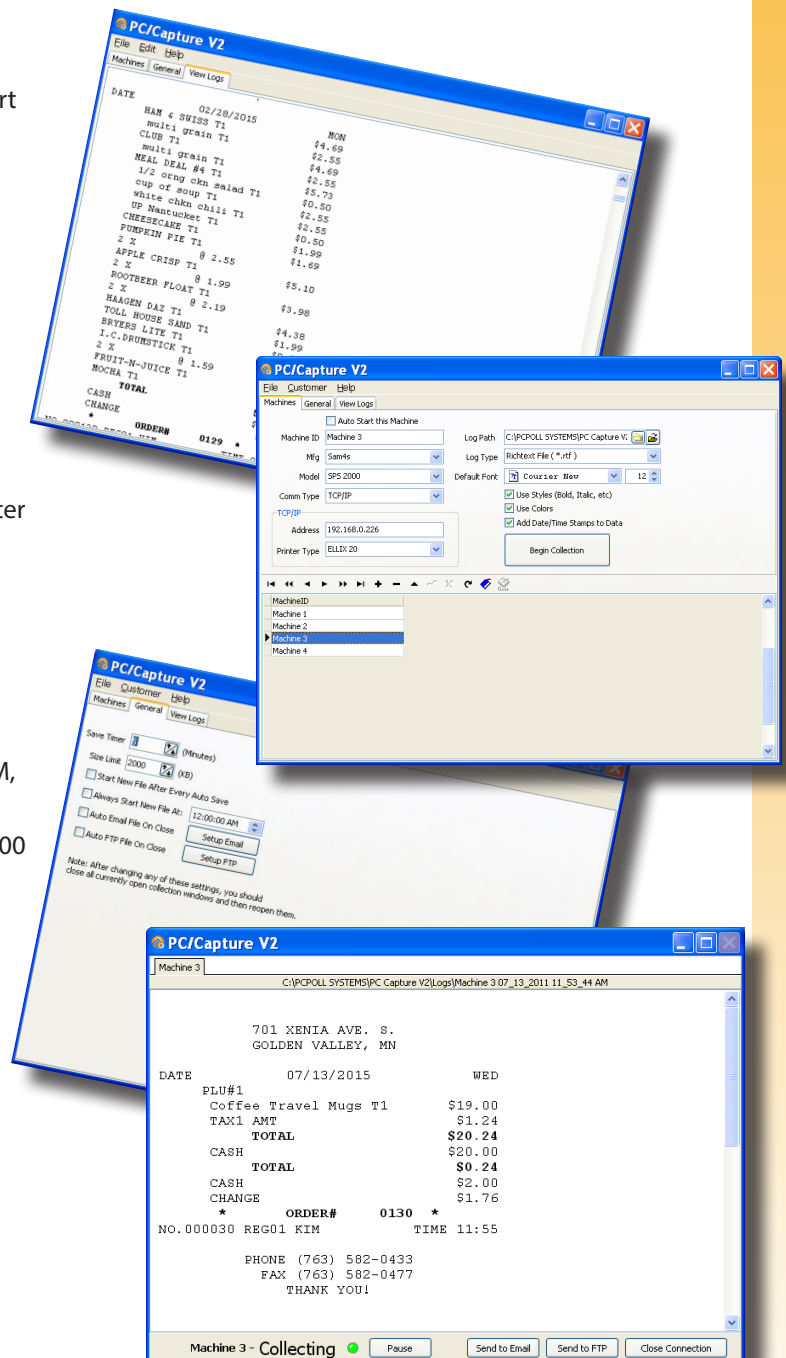
PC/Capture automatically names and creates files. It can be left running on a continual feed. You can view the data as it comes in or quickly search through and find critical information from the View Logs menu.

Easy to use preferences allow you to automatically save, email and FTP collected data files.

PC/Capture keeps track of each and every sale at the register and stores that information in a text file on the computer.

PC/Capture V2 connects to the following systems:

- CASIO: TE 2200/3000/4500, TE 7000/8500, QT6000/6100/6600
- CRS: 3000
- SAM4s: 285, 300, 39x, 600, 65x, 900, 1000, 52xx, 52xxM, 65x0, 70x0, 2000, 5x0
- Sharp: 750, 770, 771, 8x0, 3300, 3301, 3500 and 600/700 (Note: The 600/700 registers only support report collection)





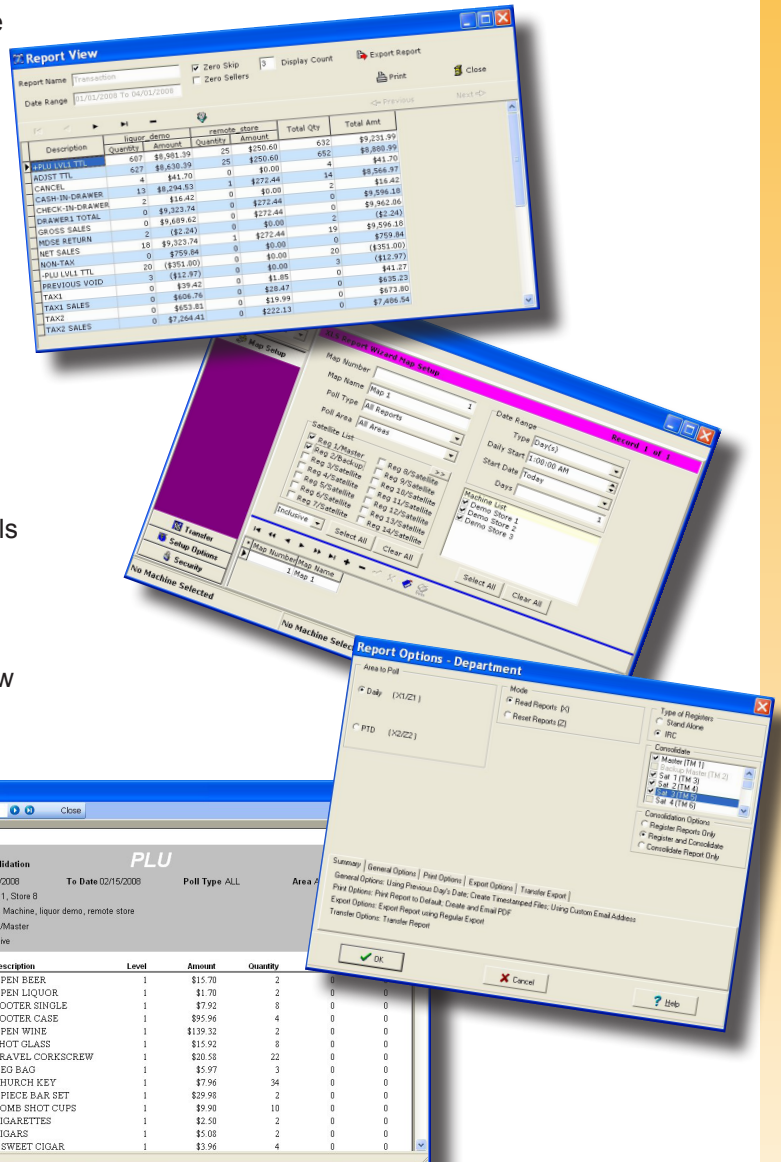
Control of Your Business at Your Fingertips

Innovation and Integration have always been the cornerstones of Tri-Tech's software modules.

PC>Poll V7 is not a cookie-cutter solution. It contains invaluable tools to help you manage your data and take it to the next level. The features within the PC>Poll software make it quick and easy to connect to your electronic cash registers (ECRs), edit information and collect important report data. Use it to bridge the gap between existing company-specific or legacy programs and the cash register. Export data into a variety of formats to allow for limitless interfacing and customization options. Let the PC>Poll software help you take control of your data!

Features:

- Automatically print, export or email report data as it is collected. Data can be transferred in .txt, .csv, .xls and .pdf formats.
- Summarize data from one or more stores in a consolidated report or spreadsheet file.
- Automatically export or import program data to allow for editing in software spreadsheet applications.
- Maintenance area exports allow for partial file importing operations.
- Multiple standard export formats to allow for quick and easy interfacing to multiple software applications, or pick and choose which fields on which reports to export!



www.technology4retailers.com
 800.670.1736
 3162 Cedar Crest Ridge · Dubuque, Iowa 52003